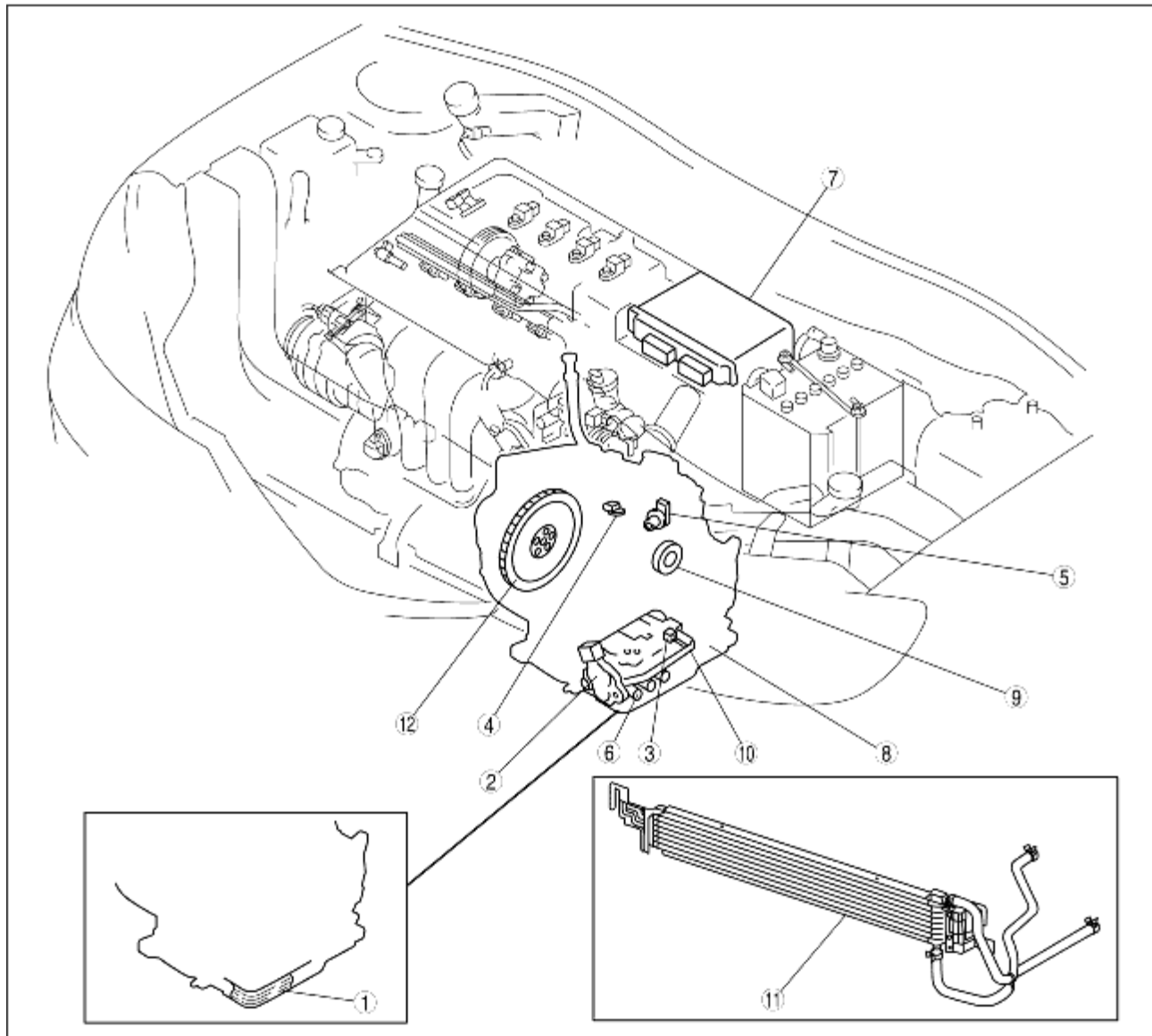


AUTOMATIC TRANSAXLE LOCATION INDEX

B3E051701074W01

Z6

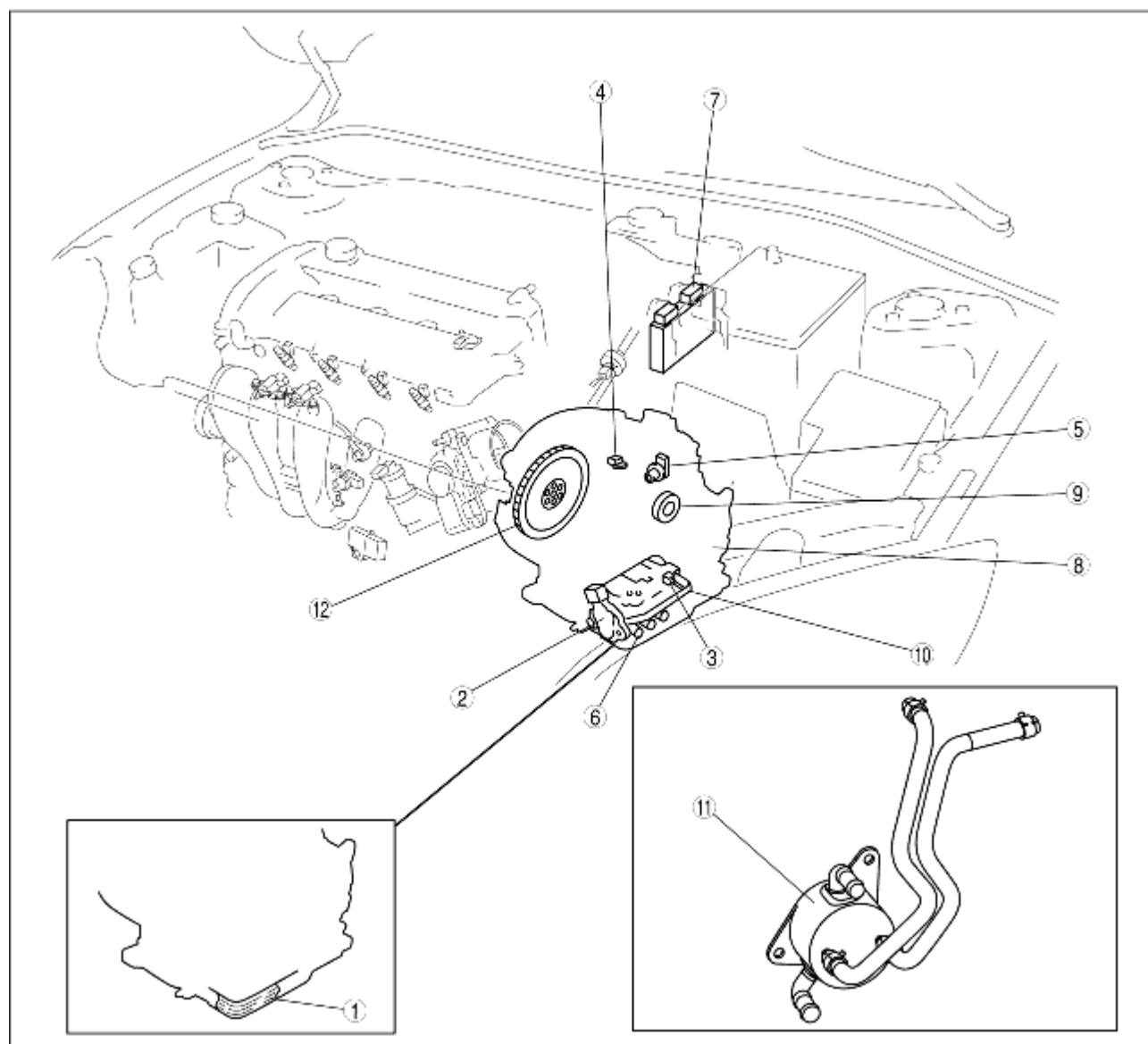


B3E0517W001

1	Automatic transaxle fluid (ATF) (See AUTOMATIC TRANSAXLE FLUID (ATF) INSPECTION.) (See AUTOMATIC TRANSAXLE FLUID (ATF) INSPECTION.)
2	Transaxle range (TR) switch (See TRANSAXLE RANGE (TR) SWITCH INSPECTION.) (See TRANSAXLE RANGE (TR) SWITCH REMOVAL/INSTALLATION.) (See TRANSAXLE RANGE (TR) SWITCH ADJUSTMENT.)
3	Transaxle fluid temperature (TFT) sensor (See TRANSAXLE FLUID TEMPERATURE (TFT) SENSOR INSPECTION.) (See TRANSAXLE FLUID TEMPERATURE (TFT) SENSOR REMOVAL/INSTALLATION.)

4	Input/turbine speed sensor (See INPUT/TURBINE SPEED SENSOR INSPECTION.) (See INPUT/TURBINE SPEED SENSOR REMOVAL/INSTALLATION.)
5	Vehicle speed sensor (See VEHICLE SPEED SENSOR (VSS) INSPECTION.) (See VEHICLE SPEED SENSOR (VSS) REMOVAL/INSTALLATION.)
6	Solenoid valve (See SOLENOID VALVE INSPECTION.) (See SOLENOID VALVE REMOVAL/INSTALLATION.)
7	PCM (See PCM INSPECTION.) (See PCM REMOVAL/INSTALLATION.)
8	Automatic transaxle (See AUTOMATIC TRANSAXLE REMOVAL/INSTALLATION [Z6].)
9	Oil seal (See OIL SEAL REPLACEMENT [AUTOMATIC TRANSAXLE].)
10	Control valve body (See CONTROL VALVE BODY REMOVAL.) (See CONTROL VALVE BODY INSTALLATION.)
11	Oil cooler (See OIL COOLER FLUSHING [AUTOMATIC TRANSAXLE].) (See OIL COOLER REMOVAL/INSTALLATION (AUTOMATIC TRANSAXLE) [Z6].)
12	Drive plate (See DRIVE PLATE REMOVAL/INSTALLATION.)

LF



B3E0517W092

1	Automatic transaxle fluid (ATF) (See AUTOMATIC TRANSAXLE FLUID (ATF) INSPECTION.) (See AUTOMATIC TRANSAXLE FLUID (ATF) INSPECTION.)
2	Transaxle range (TR) switch (See TRANSAXLE RANGE (TR) SWITCH INSPECTION.) (See TRANSAXLE RANGE (TR) SWITCH REMOVAL/INSTALLATION.) (See TRANSAXLE RANGE (TR) SWITCH ADJUSTMENT.)
3	Transaxle fluid temperature (TFT) sensor (See TRANSAXLE FLUID TEMPERATURE (TFT) SENSOR INSPECTION.) (See TRANSAXLE FLUID TEMPERATURE (TFT) SENSOR REMOVAL/INSTALLATION.)
4	Input/turbine speed sensor (See INPUT/TURBINE SPEED SENSOR INSPECTION.) (See INPUT/TURBINE SPEED SENSOR REMOVAL/INSTALLATION.)
5	Vehicle speed sensor (See VEHICLE SPEED SENSOR (VSS) INSPECTION.) (See VEHICLE SPEED SENSOR (VSS) REMOVAL/INSTALLATION.)
6	Solenoid valve (See SOLENOID VALVE INSPECTION.) (See SOLENOID VALVE REMOVAL/INSTALLATION.)

7	PCM (See PCM INSPECTION.) (See PCM REMOVAL/INSTALLATION.)
8	Automatic transaxle (See AUTOMATIC TRANSAXLE REMOVAL/INSTALLATION [LF].)
9	Oil seal (See OIL SEAL REPLACEMENT [AUTOMATIC TRANSAXLE].)
10	Control valve body (See CONTROL VALVE BODY REMOVAL.) (See CONTROL VALVE BODY INSTALLATION.)
11	Oil cooler (See OIL COOLER FLUSHING [AUTOMATIC TRANSAXLE].) (See OIL COOLER REMOVAL/INSTALLATION (AUTOMATIC TRANSAXLE) [LF].)
12	Drive plate (See DRIVE PLATE REMOVAL/INSTALLATION.)